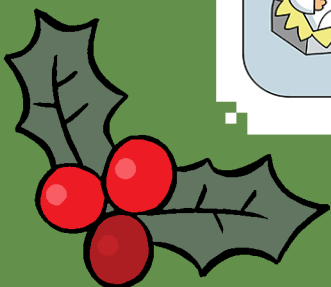
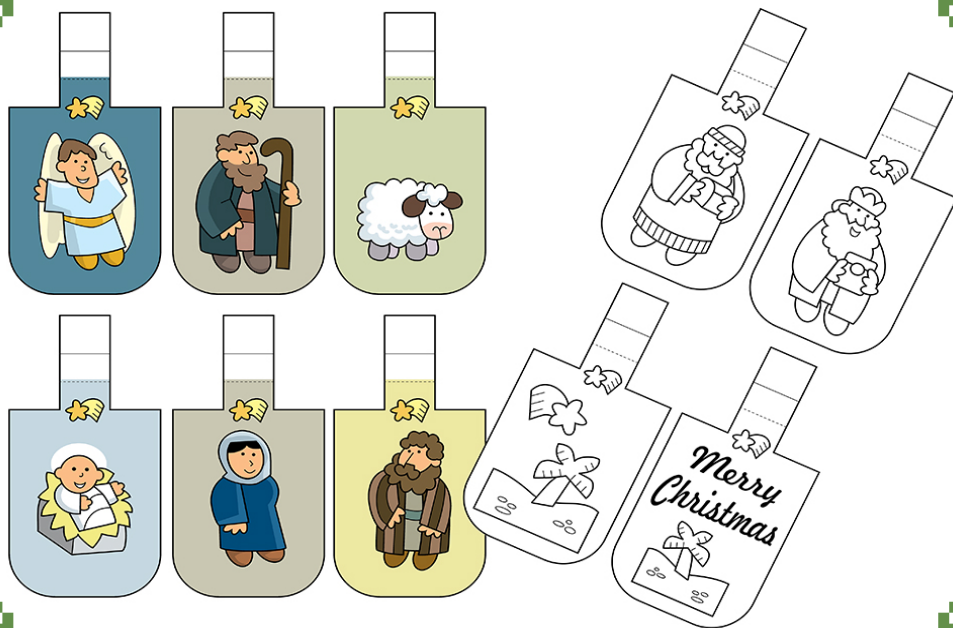




Christmas Paper Garland



MATERIALS NEEDED

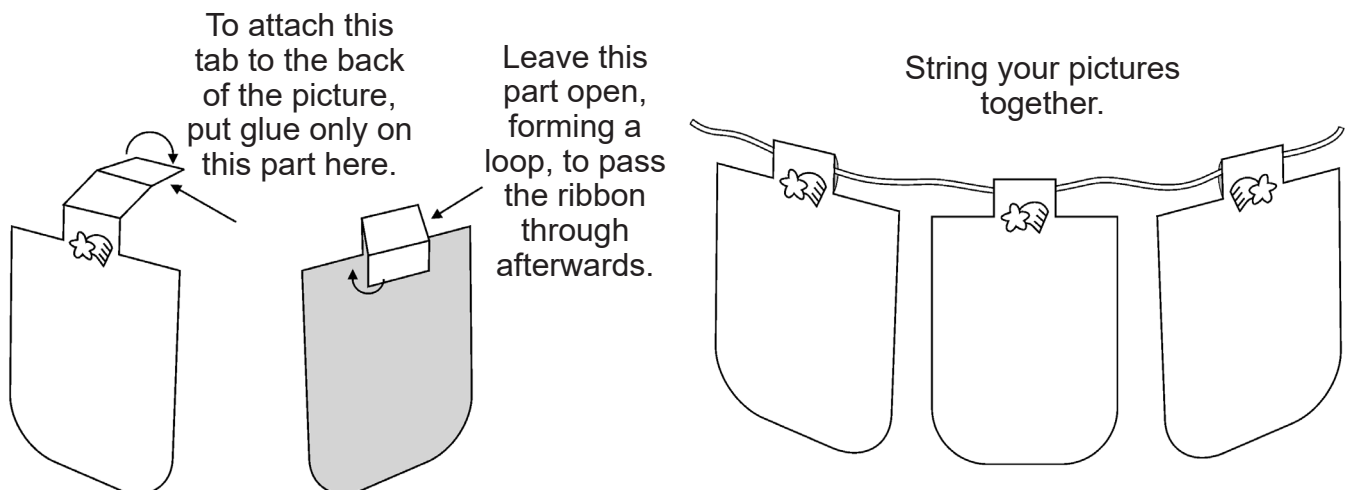
- White cardstock or heavier paper (160 g. recommended)
- Colorful string or ribbon of your choice (approximately 20 cm per ornament)
- Scissors
- Glue stick or white glue
- Optional: paper-cutting knife and double-side tape

PRINTING

Print the ornament pages on cardstock or heavier paper (160 g. recommended).

For the color version, print pages 4, 5, and 6. If you prefer black and white for coloring, print pages 7, 8, and 9. Print page 10 for drawing your own pictures.

ASSEMBLY INSTRUCTIONS FOR THE CHRISTMAS PAPER GARLAND



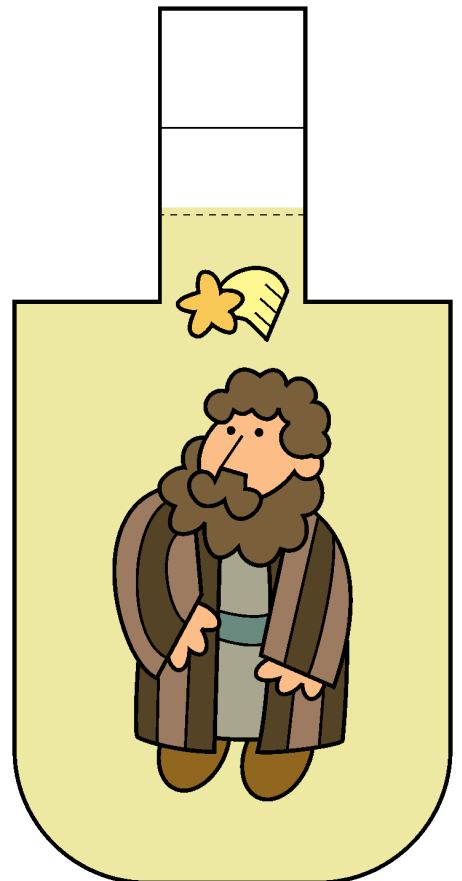
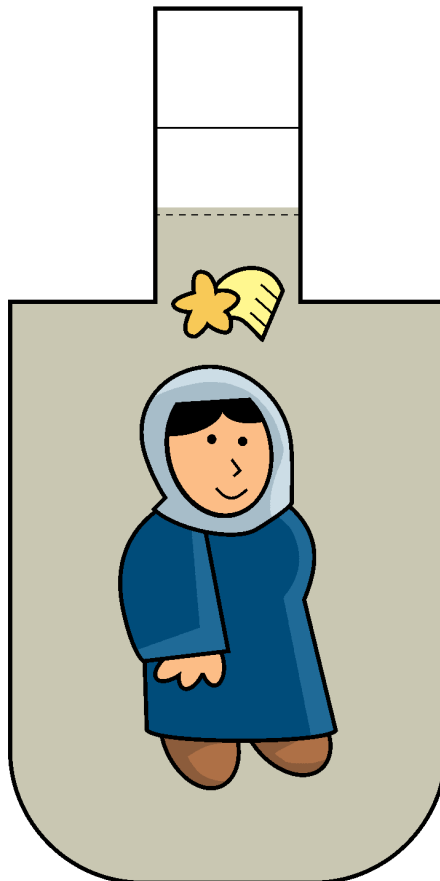
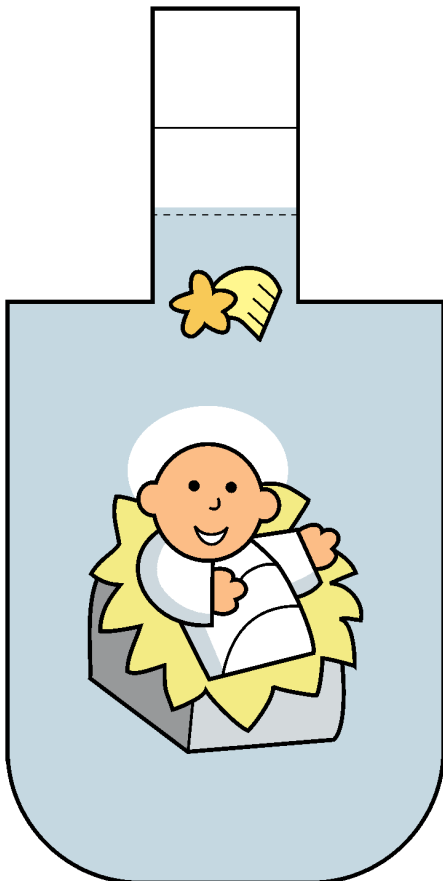
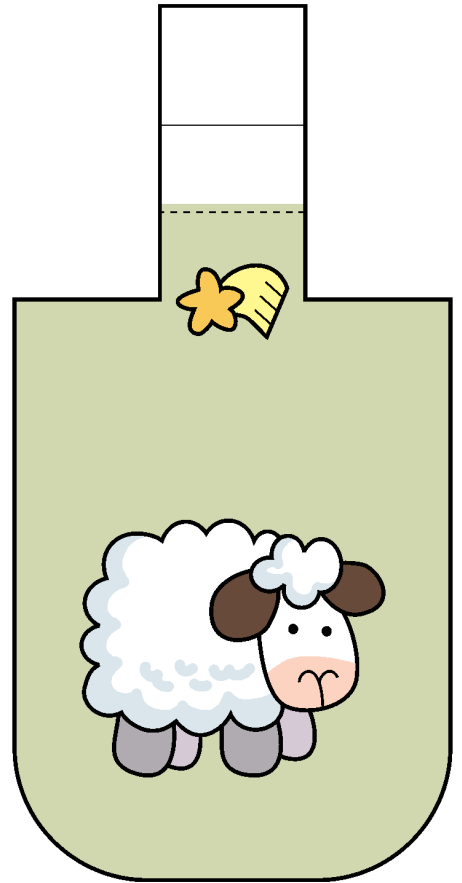
If planning to color the garland, start by coloring the illustrations. (Note: On page 10, if you like, there are blank garland tabs that you can use to illustrate your own garland additions.)

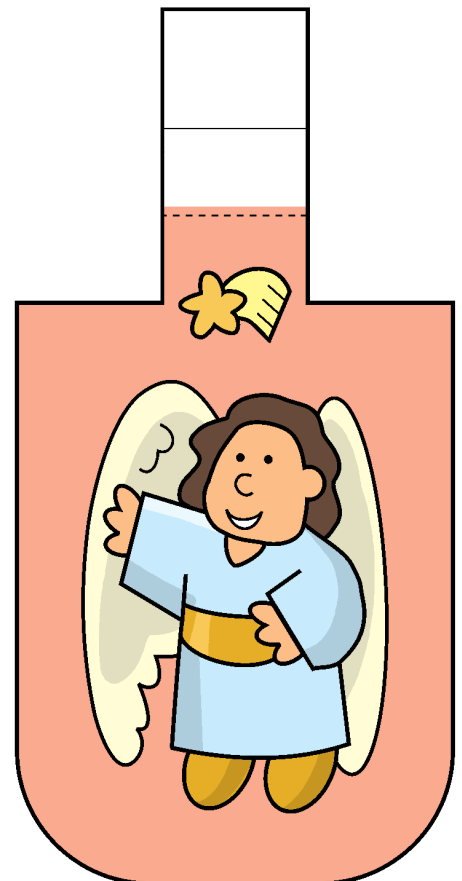
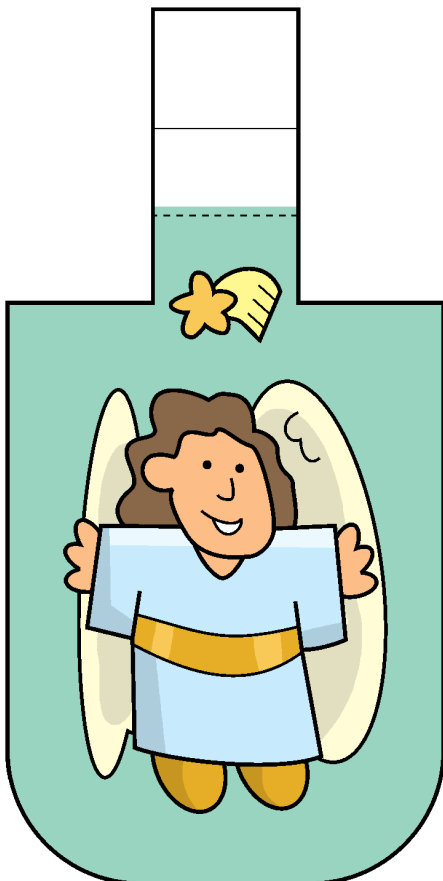
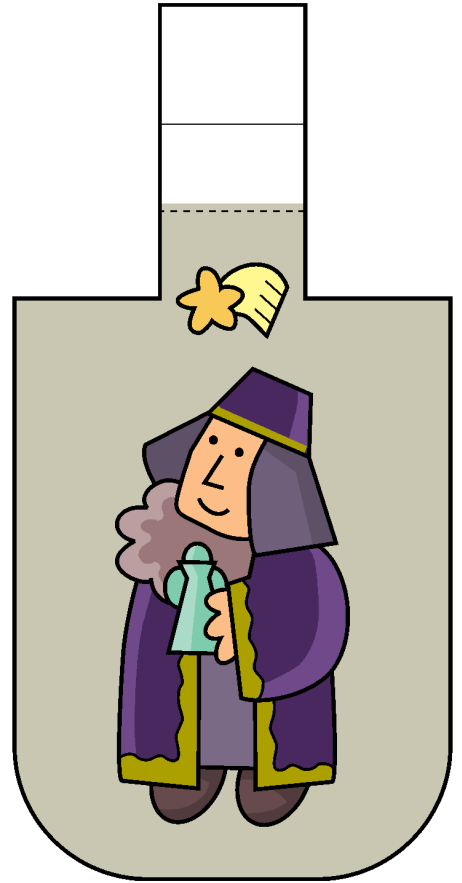
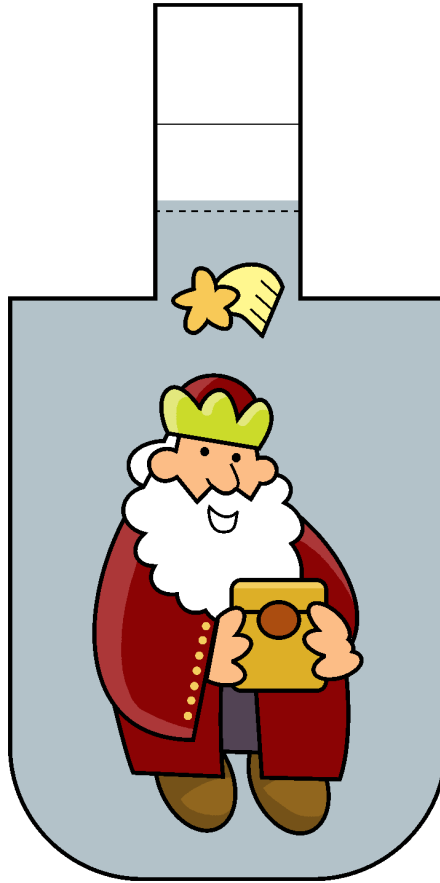
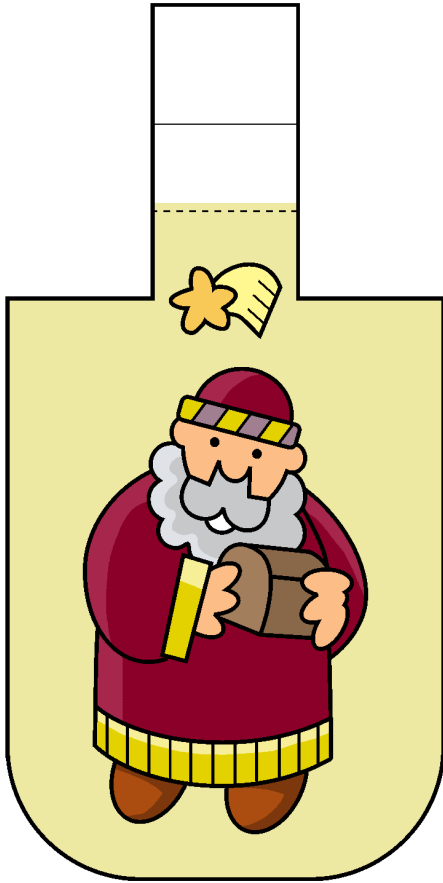
Cut out each garland piece, leaving a millimeter or two around the black line.

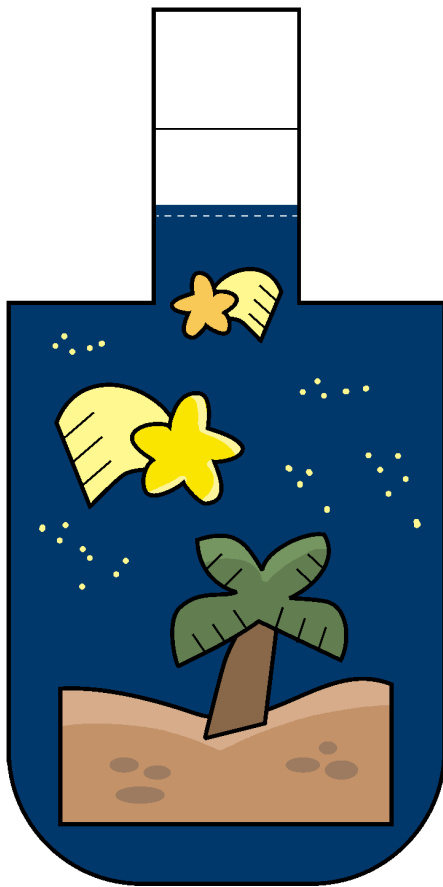
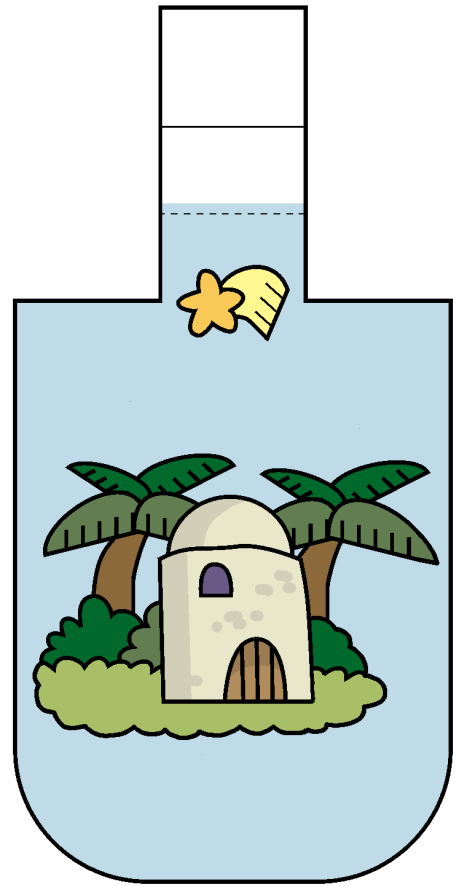
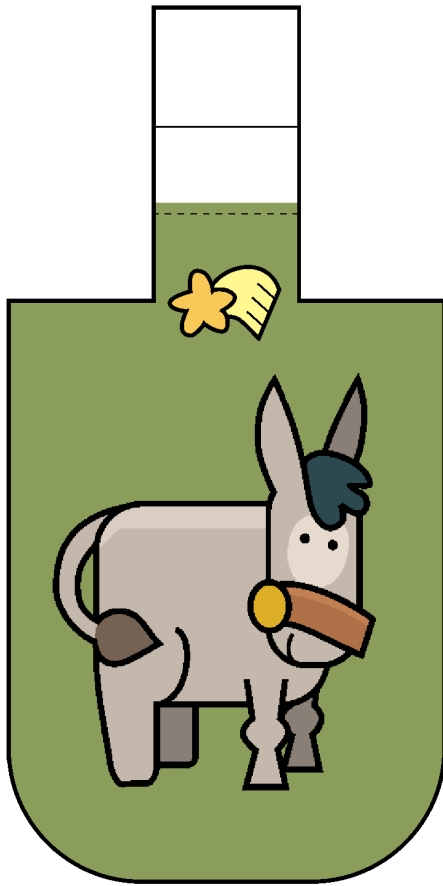
Fold the tab over and glue it on the back of the picture so that it forms a loop. Put glue only on the last part of the tab.

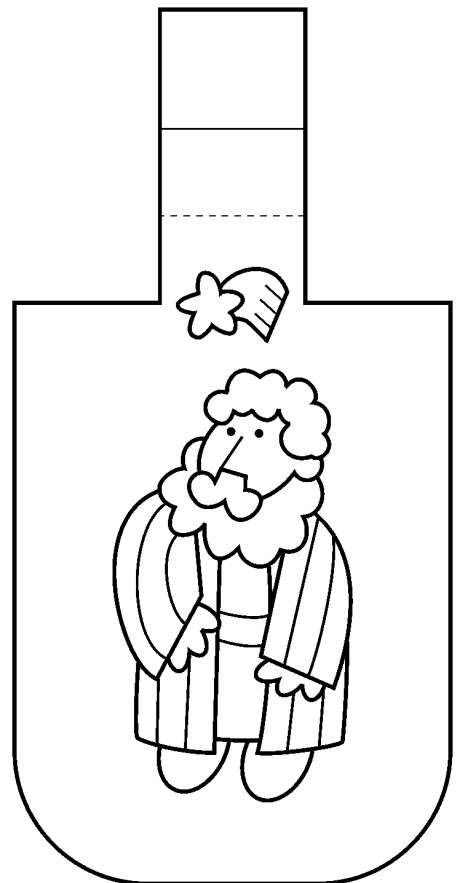
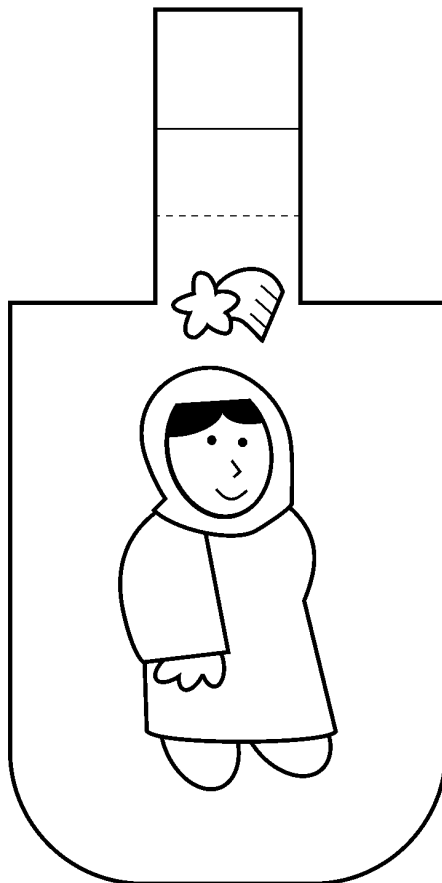
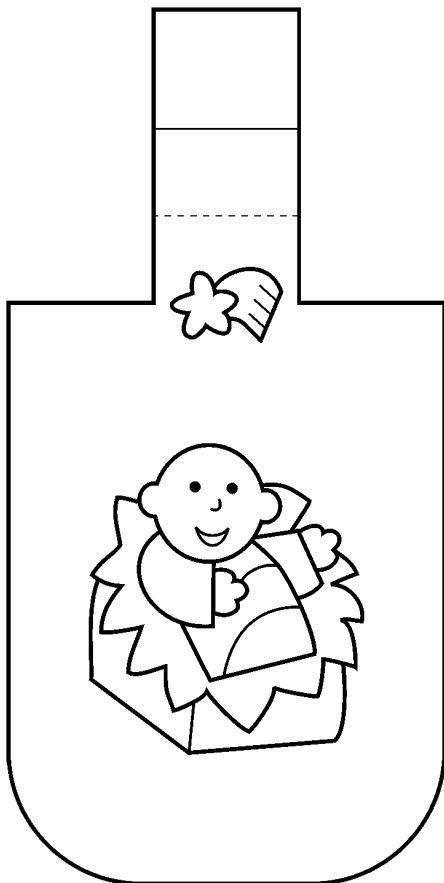
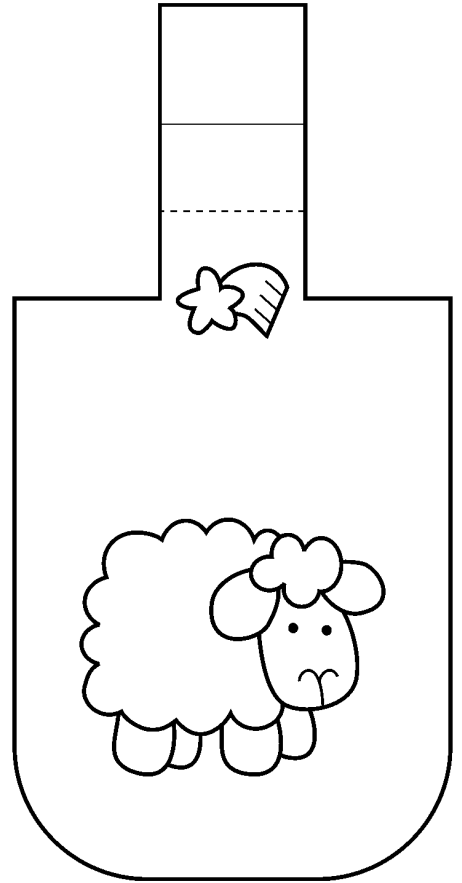
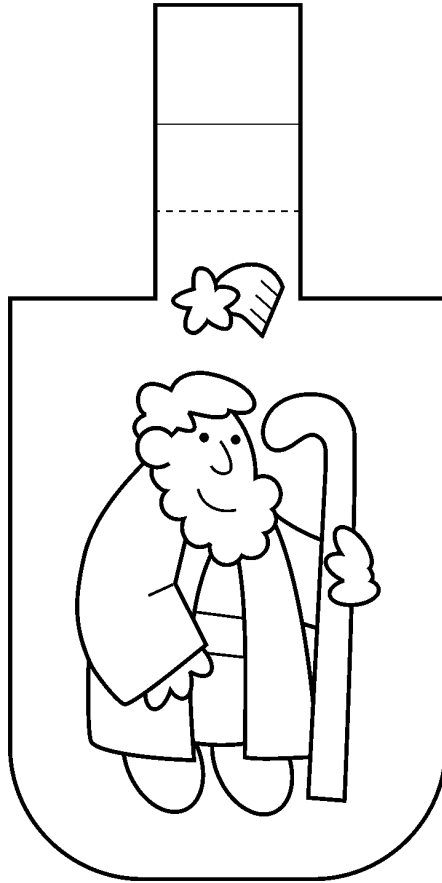
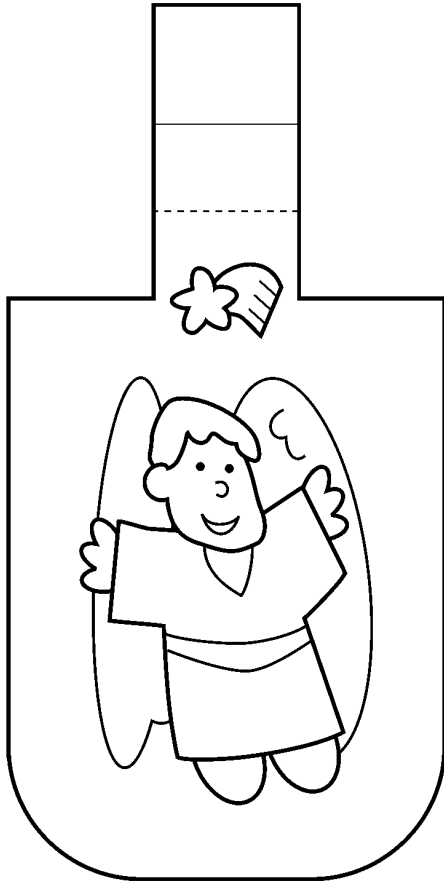
Once the glue has dried, randomly string all your pictures together using a colorful ribbon or string.

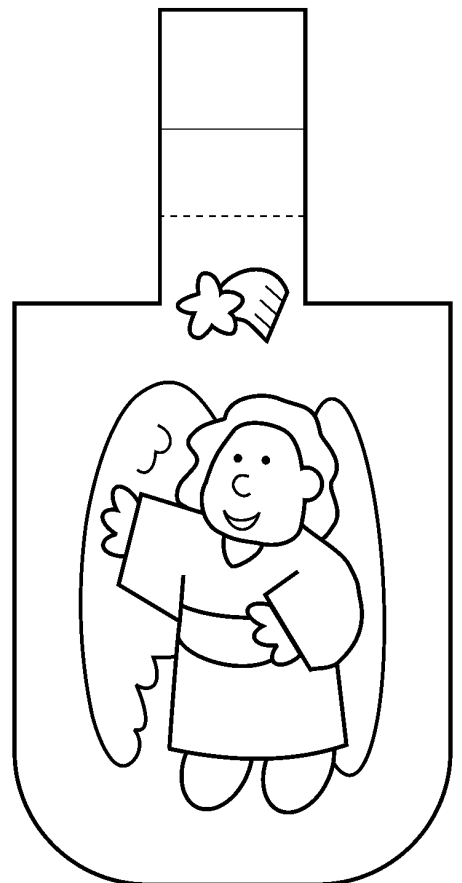
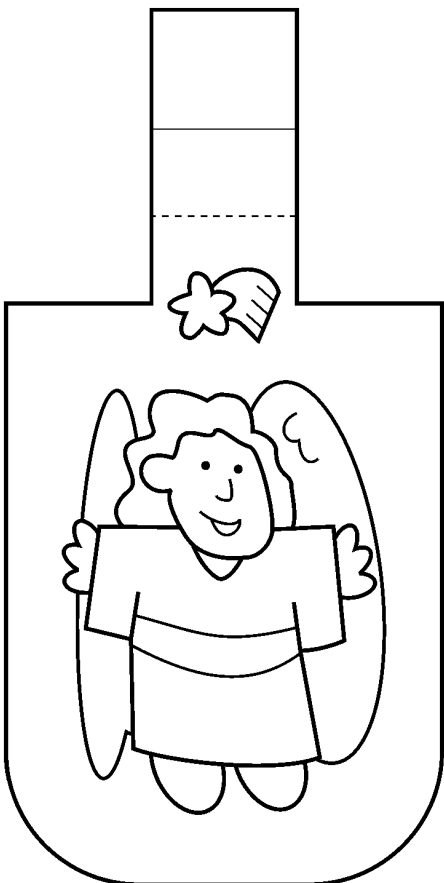
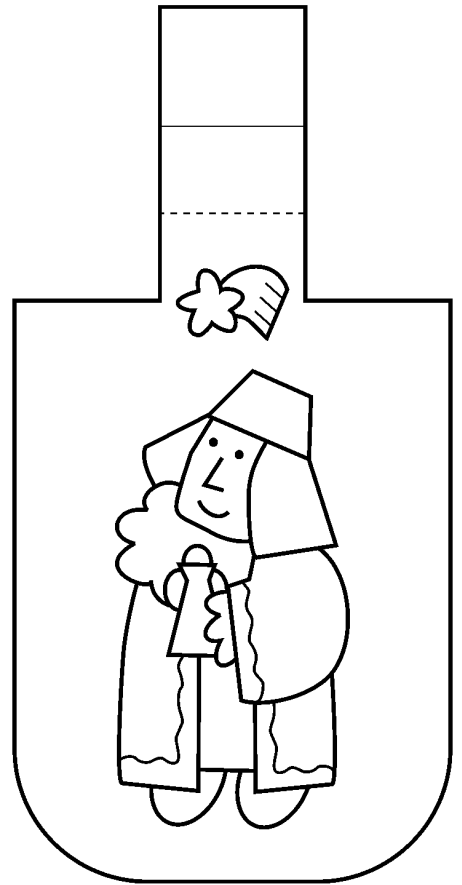
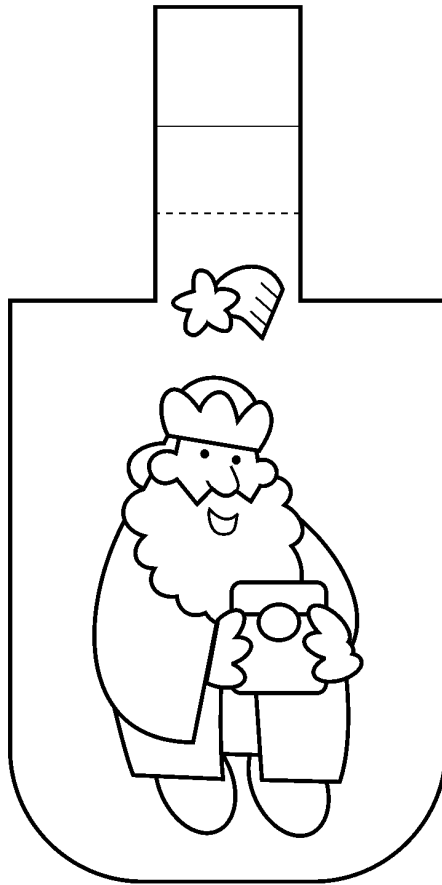
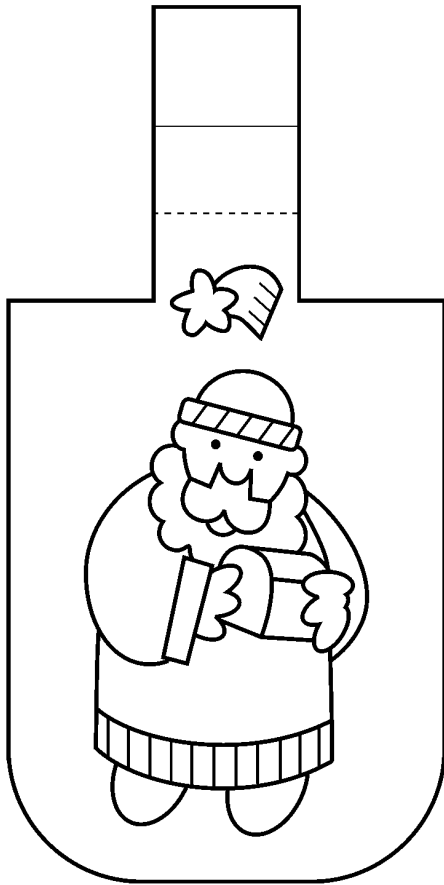
Place the garland on your Christmas tree or elsewhere in your house as a decoration.

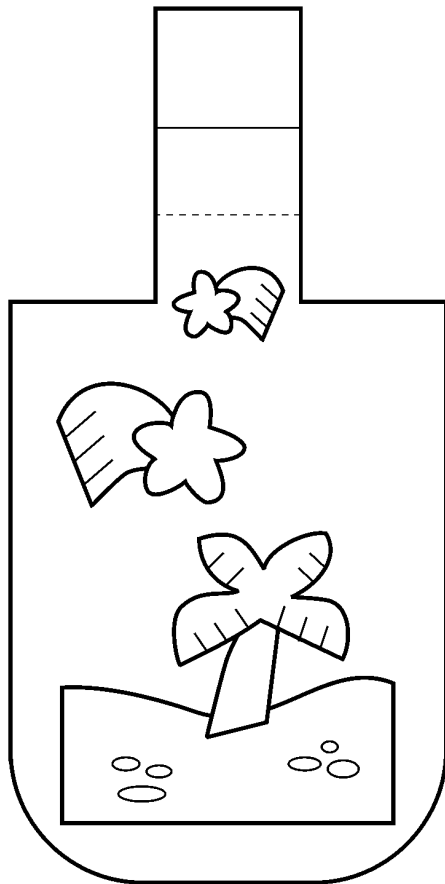
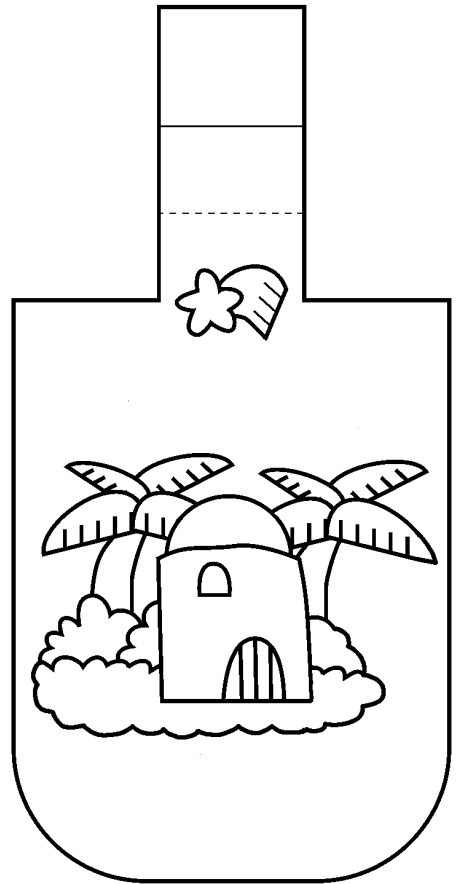
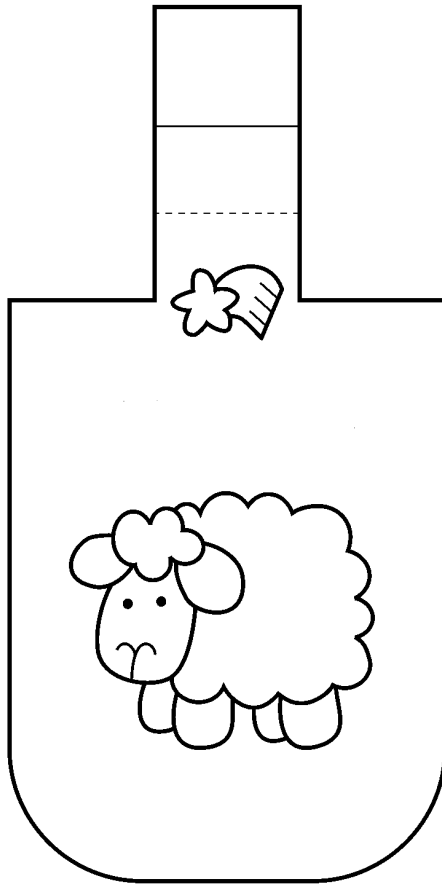
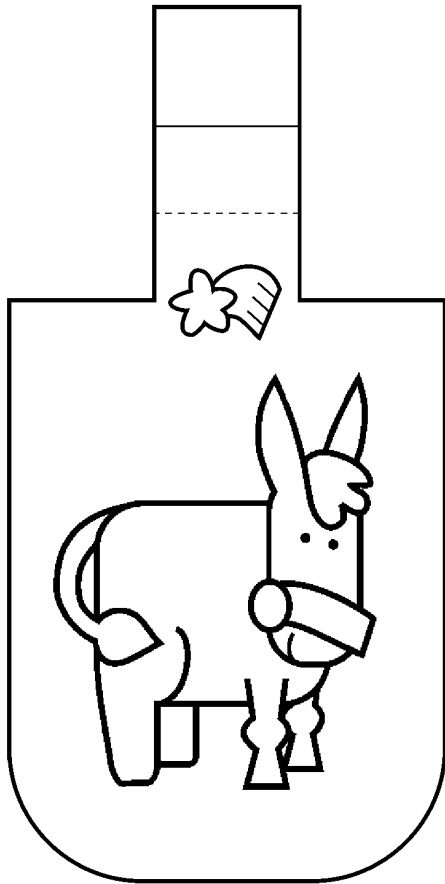












Draw and color your own pictures to add to the garland.

