

The true story of Christmas involves several faith-filled models!

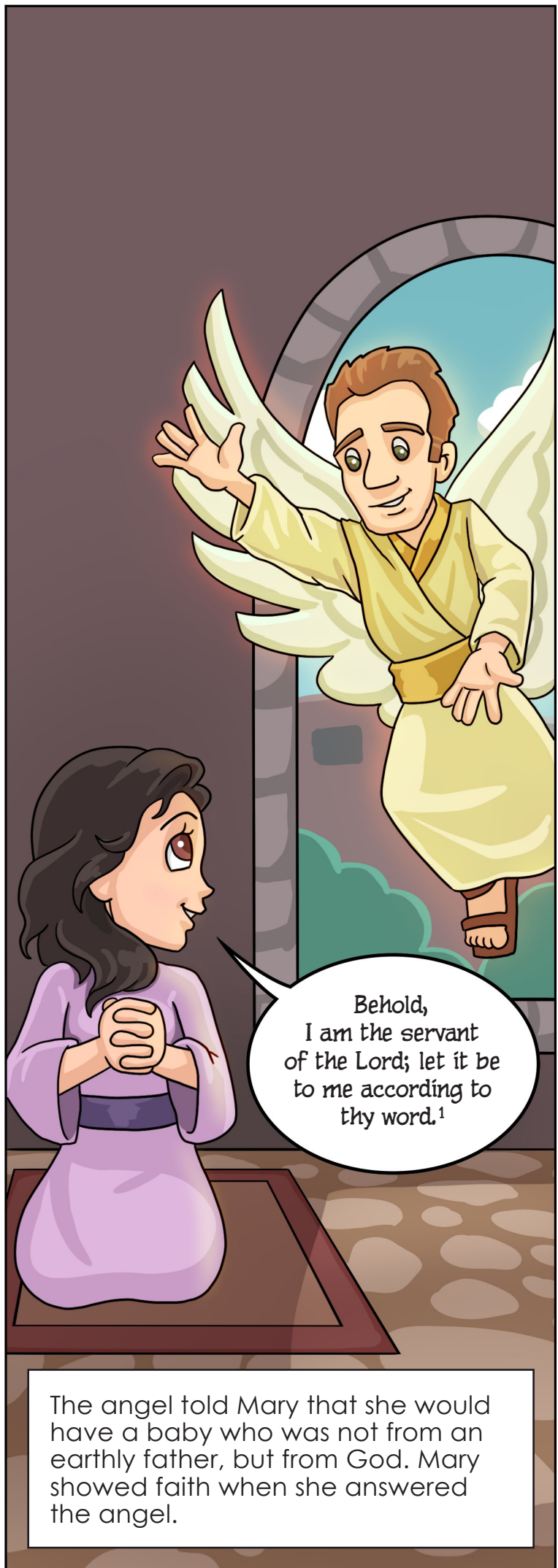
Mary and Joseph manifested great faith in God by accepting the responsibility of being parents to Jesus, God's Son.

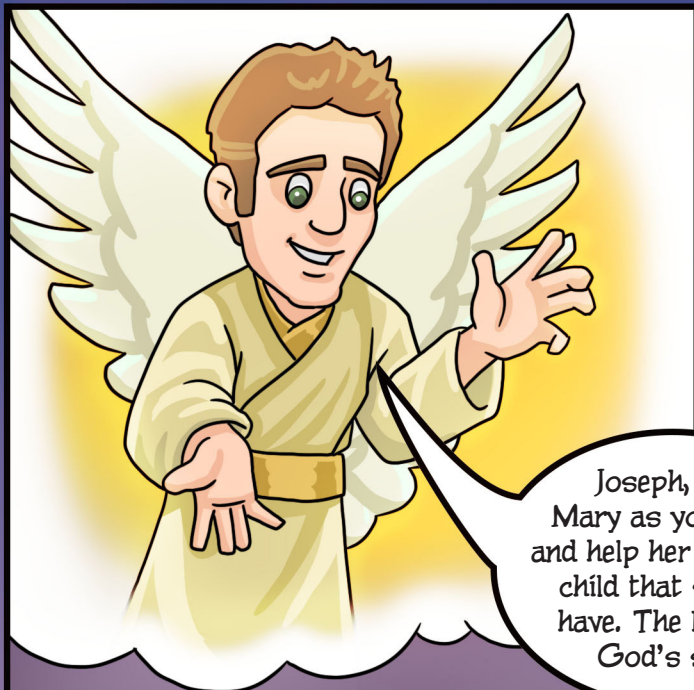


¹ Luke 1:38, paraphrased

**Faith-filled Models from
the New Testament:**

**Mary and
Joseph**



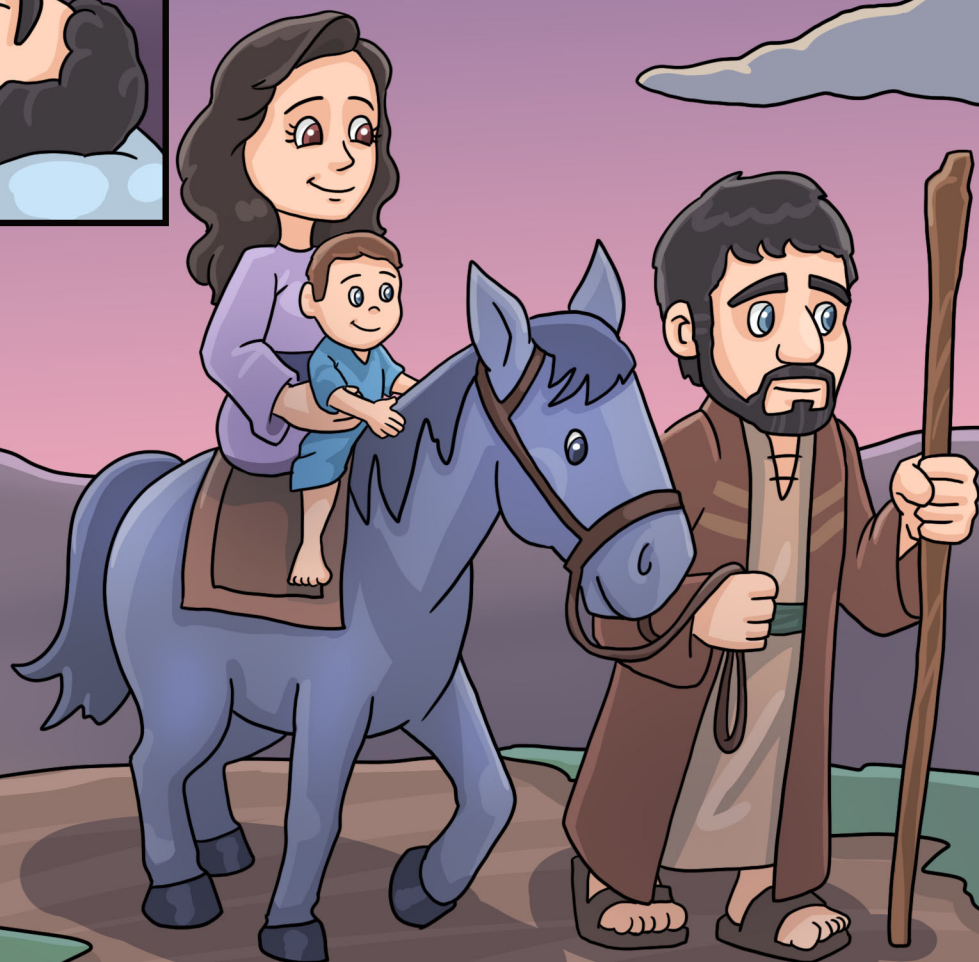


Joseph, take Mary as your wife and help her raise the child that she will have. The baby is God's son.



Get up! Take the child and his mother into Egypt!

Later when the king sent soldiers to Bethlehem to find and kill the Christ child, Joseph was warned beforehand in a dream. Joseph showed his faith in God by getting out of bed and taking Mary and the child Jesus to safety in Egypt.



Can you think of other models of faith found in the story of the first Christmas? Check out these Christmas links to find stories of great faith portrayed during the first Christmas story.

S&S link: Christian Life and Faith: Biblical and Christian Foundation: Faith-1a

Authored by Evan Kallen. Illustrations by Y.M. Design by Stefan Merour. Published by My Wonder Studio. Copyright © 2017 by The Family International