

Jesus' Little Lambs

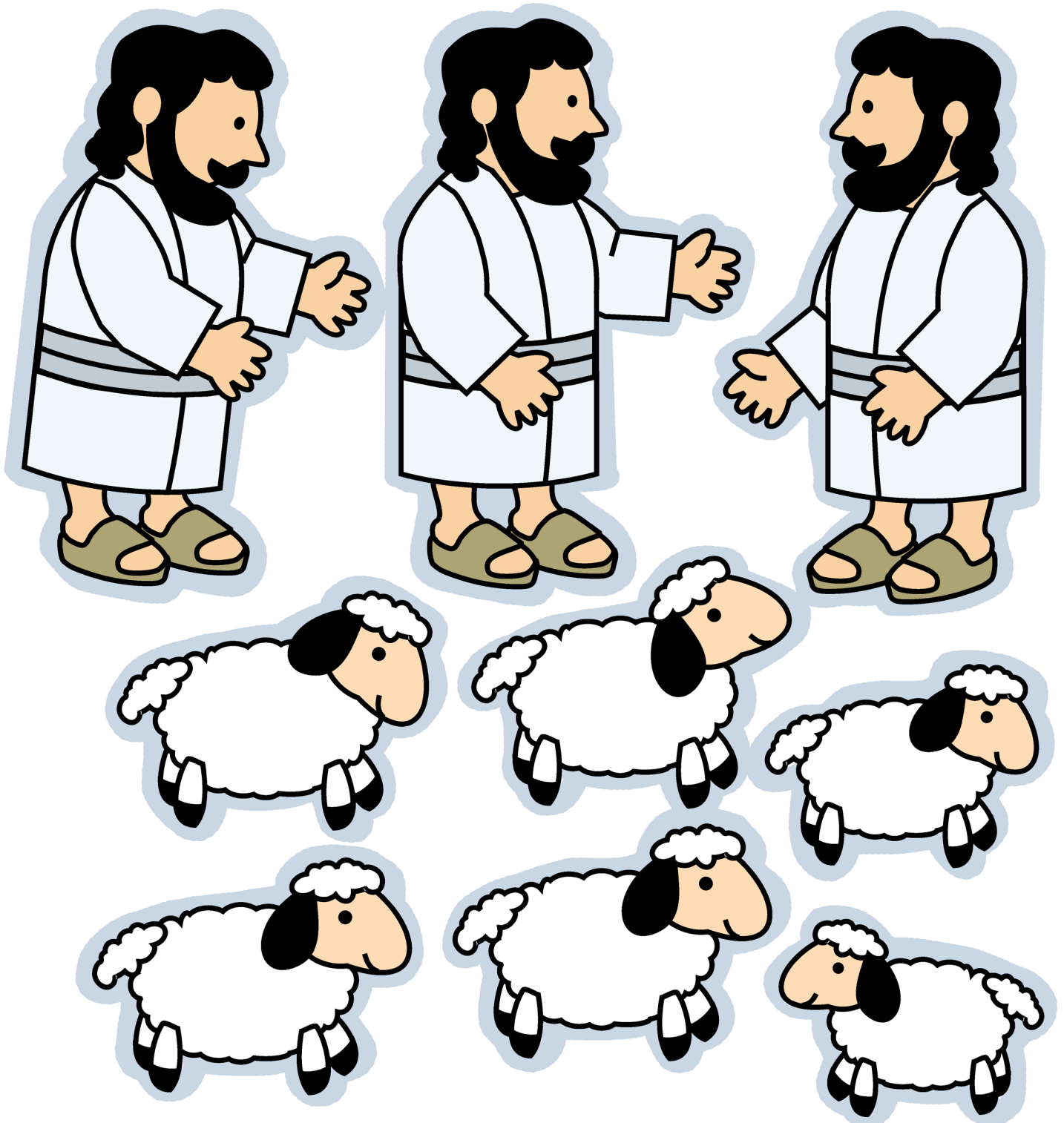
Tiny Bible Treasures

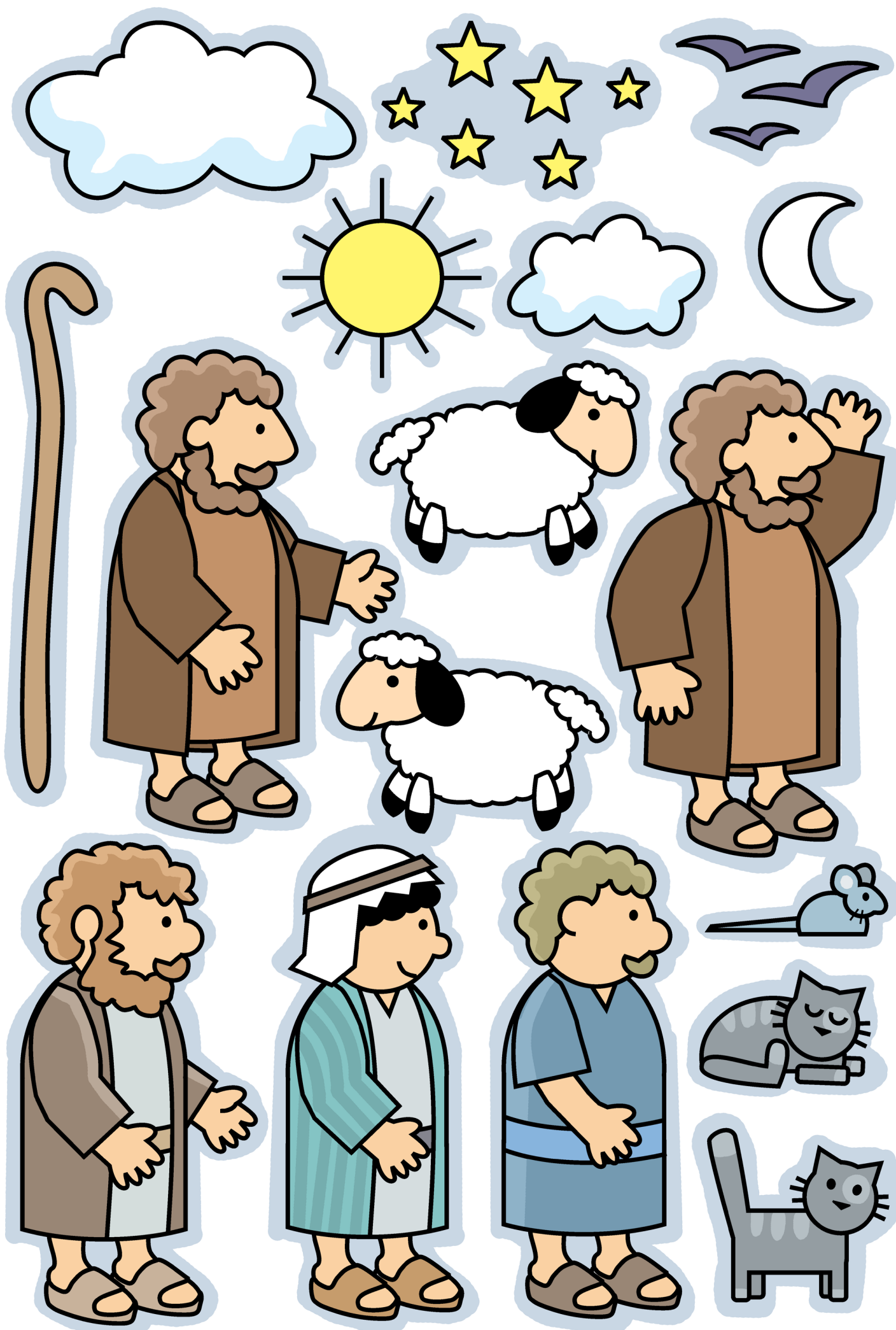
Based on John 10:1–16 and Luke 15:4–7

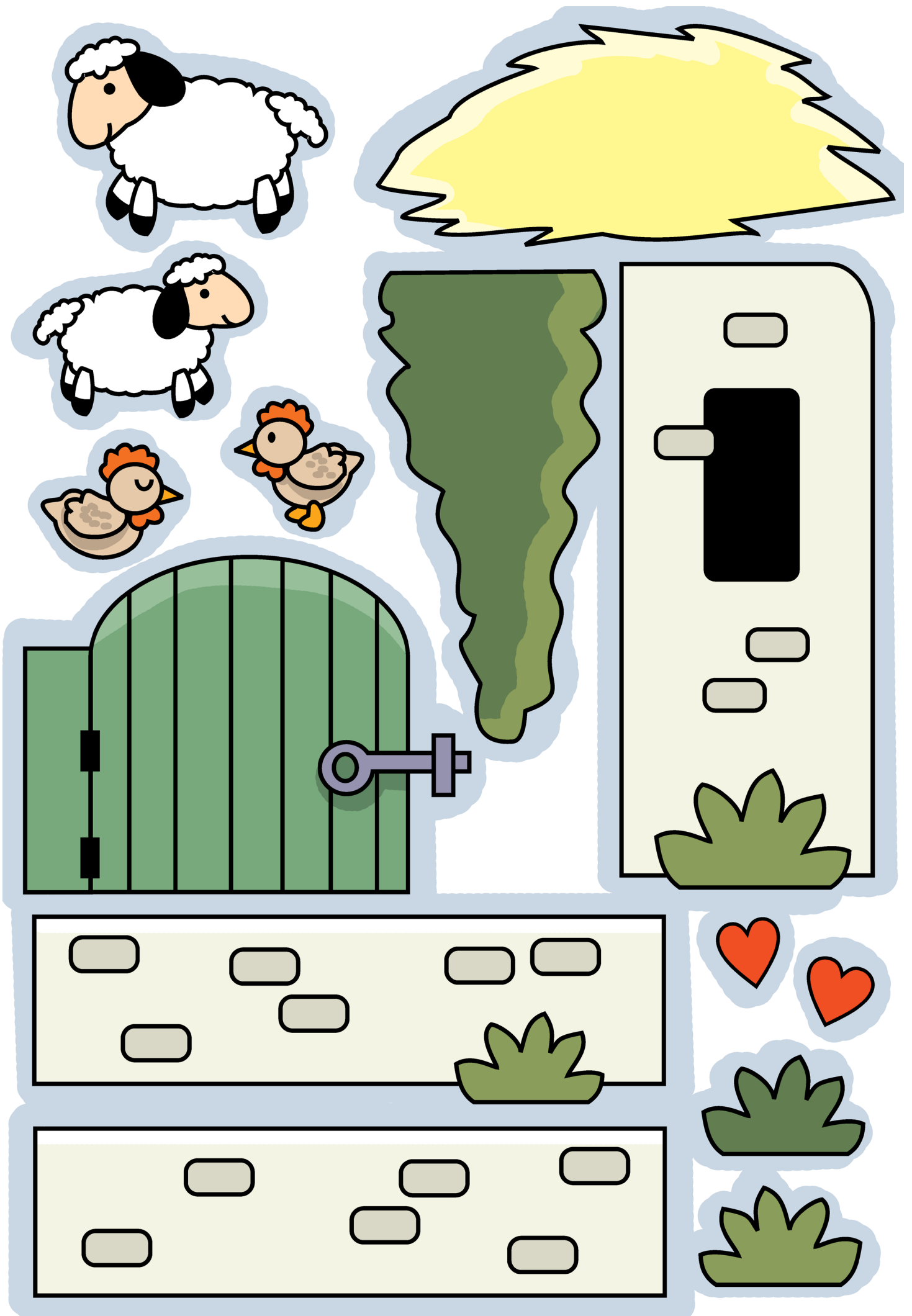
Flannelgraph

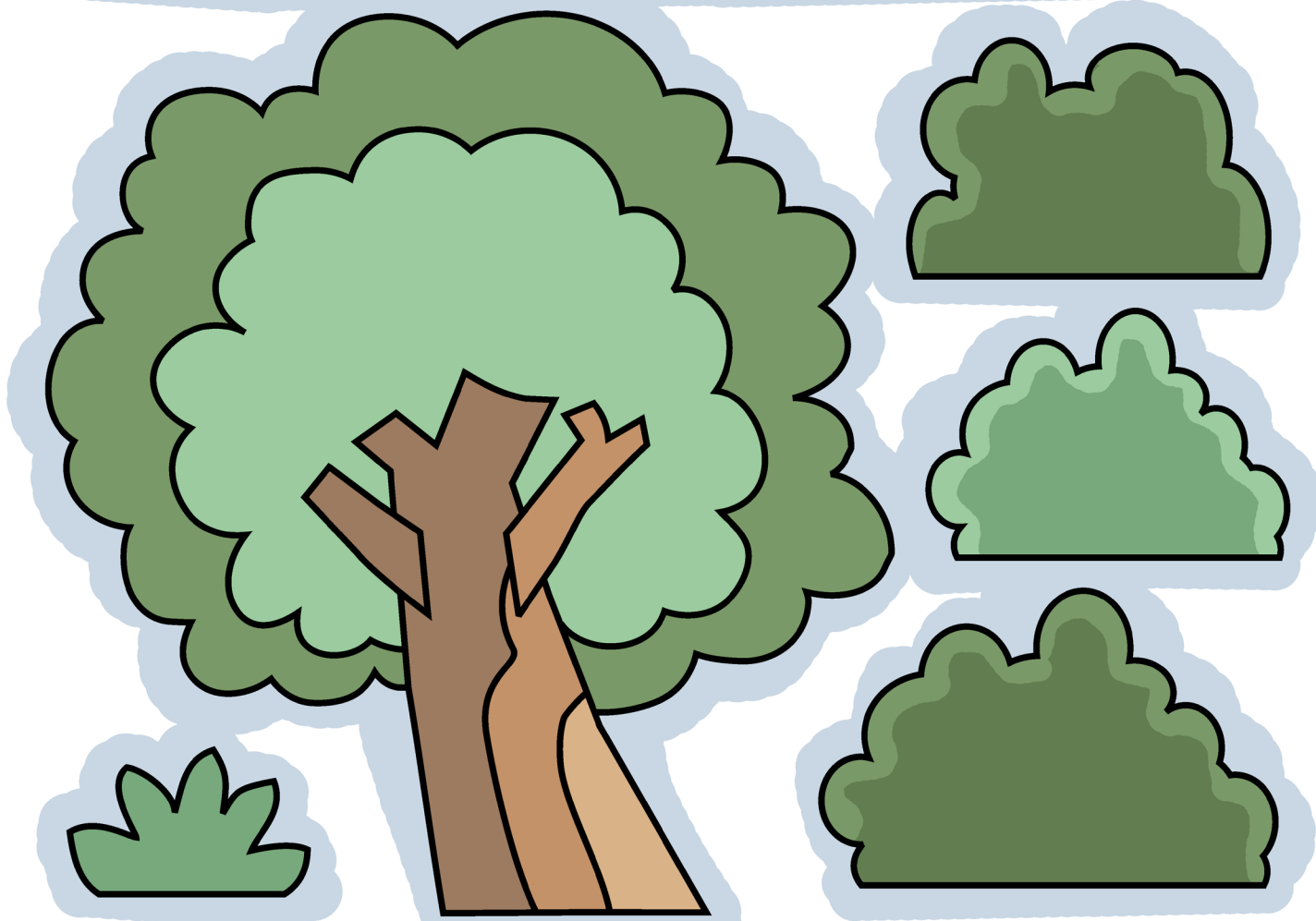
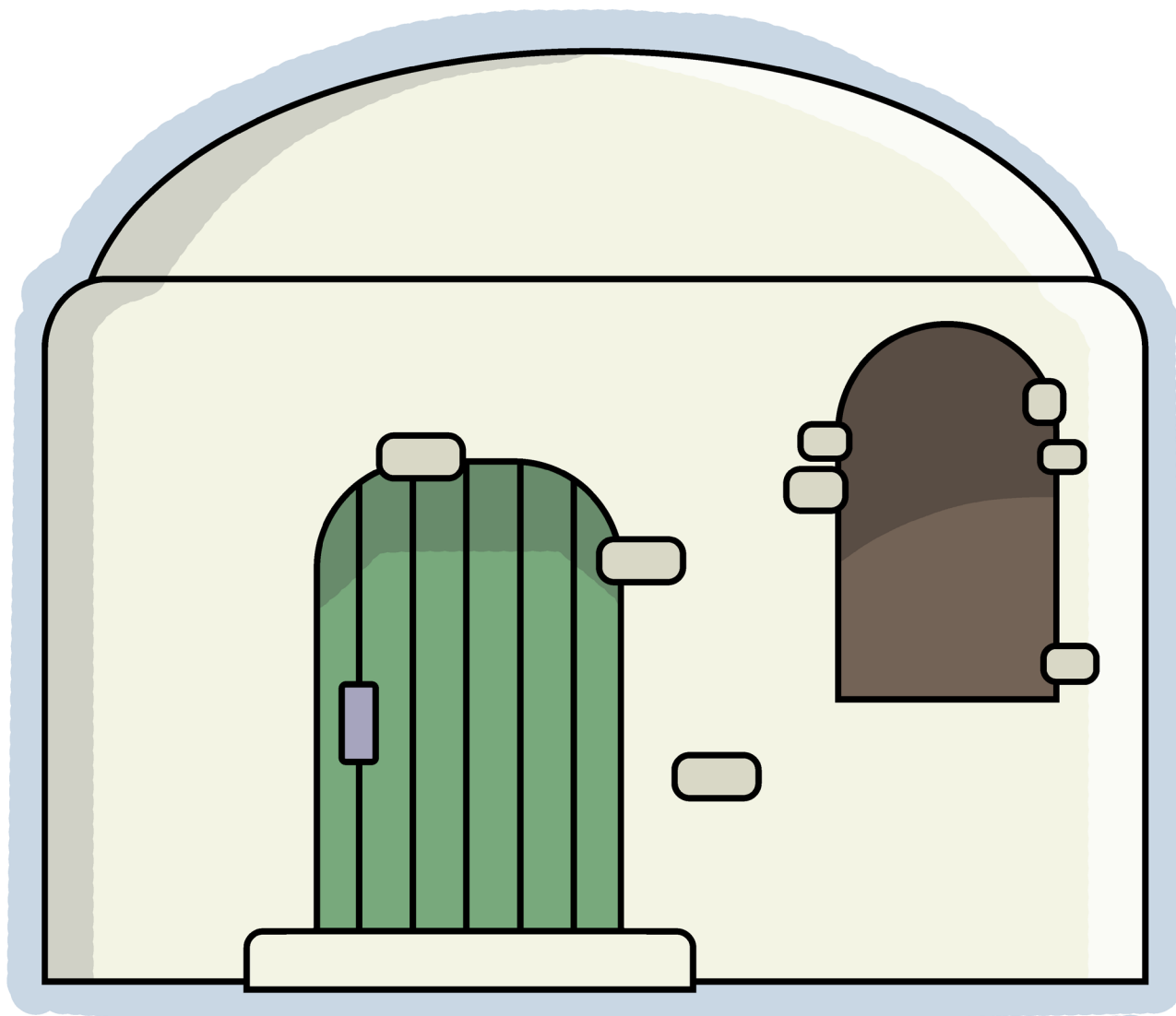
Cover the front with clear contact paper. Cut out the pieces. Glue small pieces of sandpaper or felt on the back of each piece, so they will stick to a flannel board. Use these flannelgraph pieces to tell the story of the lost little sheep as told in John 10:1–16 and Luke 15:4–7, or read the story included with this activity.

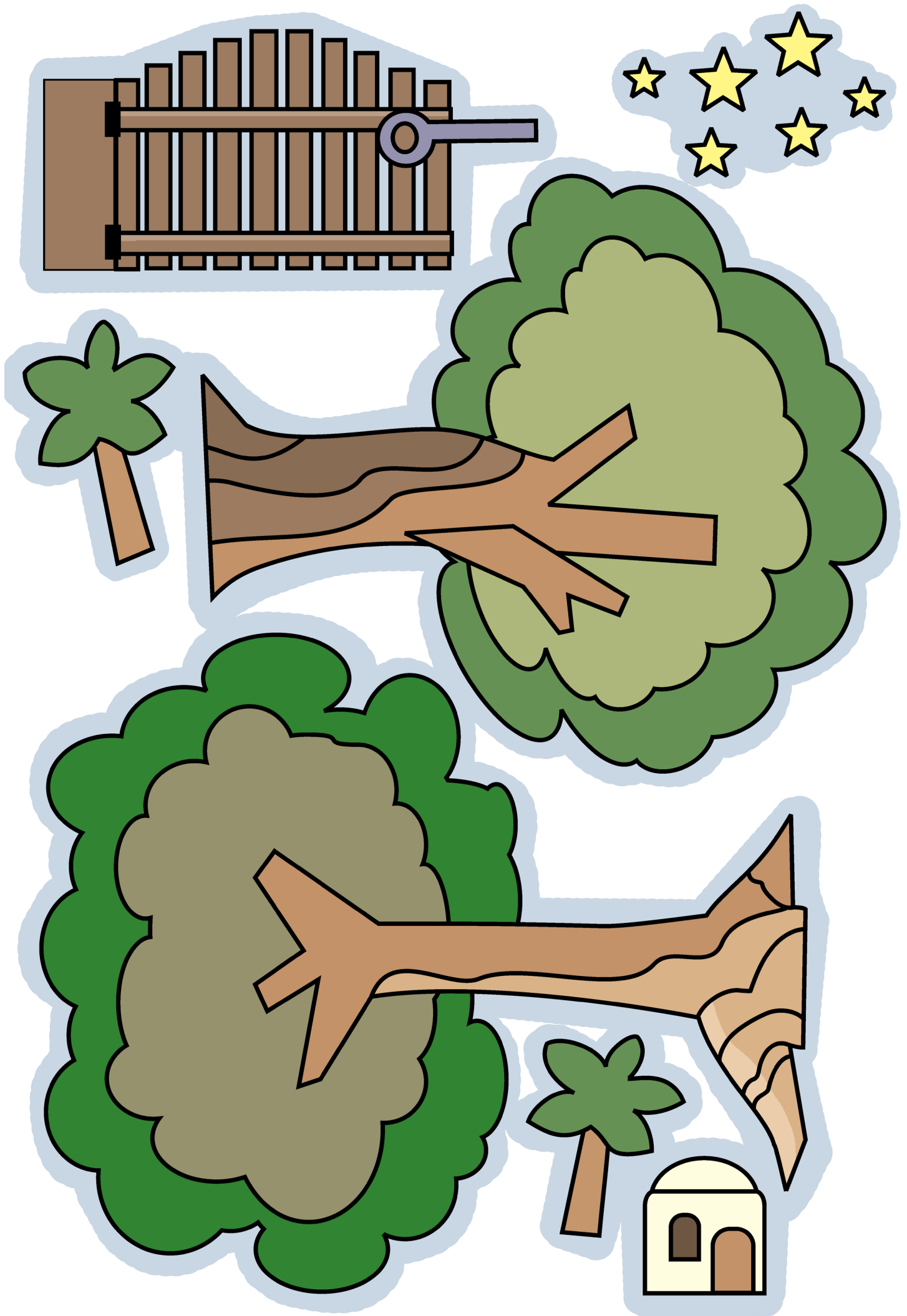
You can also photocopy the pages, and use these figures for other activities, such as, coloring pages, to create your own reader, wall posters, mobiles, etc.













Jesus' Little Lambs

Based on John 10:1–16 and Luke 15:4–7

Jesus is a good shepherd. He knows each of His little sheep by name. And His sheep know Him too.

Jesus stands at the gate of the sheep pen. Jesus will take care of any little sheep that asks to come into the gate of the sheep pen. Those sheep will be saved. The shepherd will make sure that His sheep have everything they need.

Jesus once told a story about a man who owned one hundred sheep. Every evening he would count to make sure that all the sheep had come back from the pasture.

One evening he was counting his sheep. "Oh no, one sheep is missing!" the shepherd cried.

The shepherd quickly closed the gate of the sheep pen and

hurried to find his lost sheep. He went out in the dark to search for his lost sheep. He looked everywhere—in the forest ... on top of the hills and even between the rocks. Until at last, he found his little lost sheep!

The shepherd was overjoyed. He put the sheep on his shoulder and carried it all the way to the sheep pen. At last the little sheep was safe in the pen again, home with its other sheep friends!

Jesus told His disciples, "I tell you this story, so that you will know that I care for you."

Jesus is like the shepherd. He doesn't want one little sheep to be lost. He will always take care of you, because He loves you very much.

The end