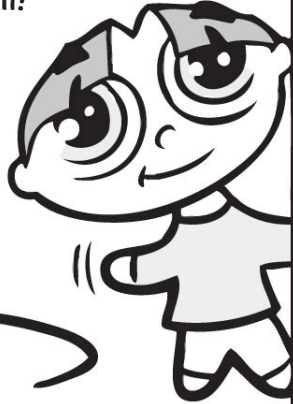


TURN OTHERS' FOCUS TO
JESUS—THE LIGHT



I'm learning to help
others

Hi!



Turn their focus
toward Jesus' light.



It's not always easy to do,
But it's giving them
heavenly sight.

0000...



I started with our
dog, Buzzy.

He was sad because
he'd lost his bone.



I fed him a yummy
dog snack,



And with wagging tail
his happiness was
shown.



Then, when my older
sister was cranky,



And seemed rather
down to me,

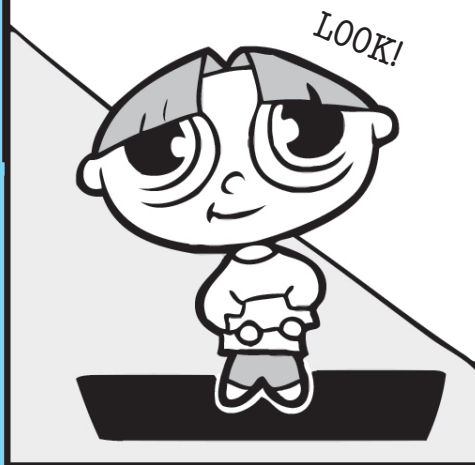


I thought, I'll help her
focus

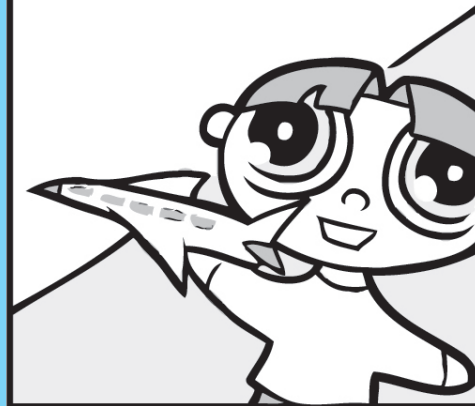


On the good things
that I see.

"Look, sis, here's my
favorite car,

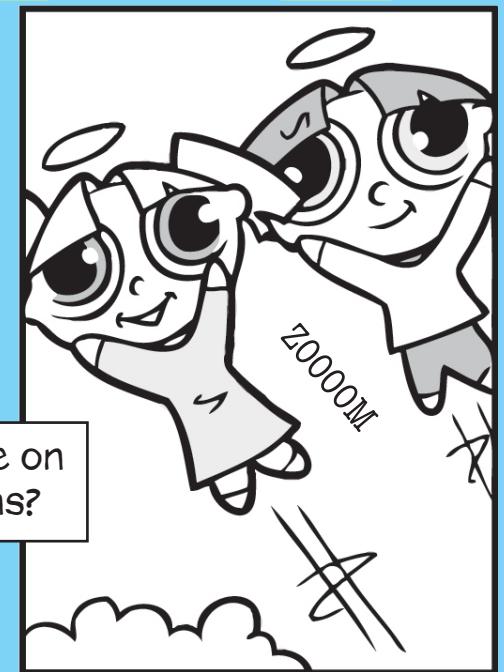


And this is my fastest
jet plane.



Do you think we'll fly as
fast as this

When we arrive on
heaven's plains?

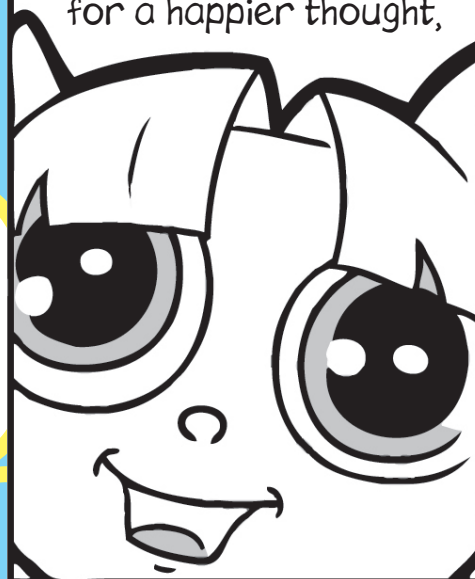


At first she seemed quite puzzled.

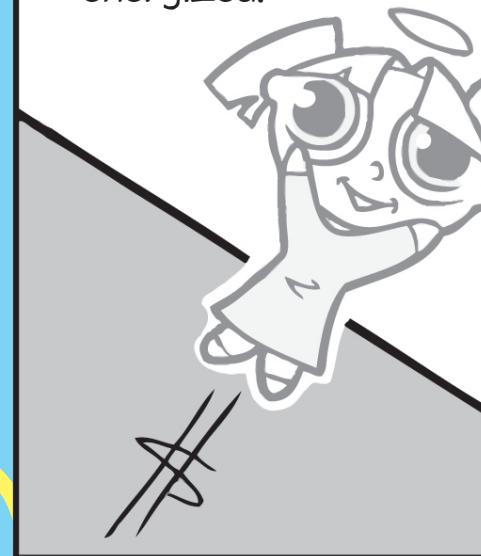


I had taken her by surprise.

Then she said, "Thanks for a happier thought,



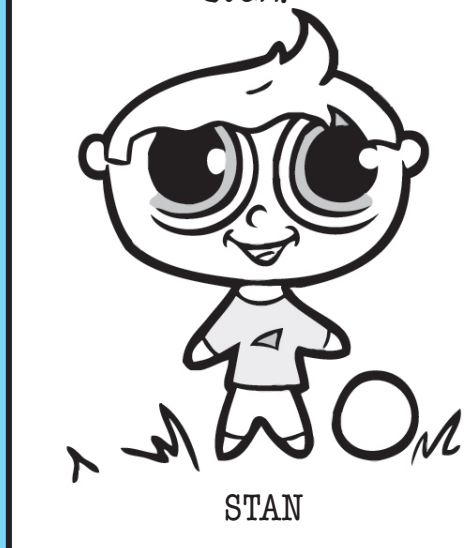
"My spirit is now energized!"



Off she went, and then it was time



To try this for my friend, Stan.



He dropped in on his way home from school,

And tears from his eyes just ran.



I asked him, "What's the matter, Stan?"



"Did something go wrong at school?"

He answered, "Yes, I missed the goal,



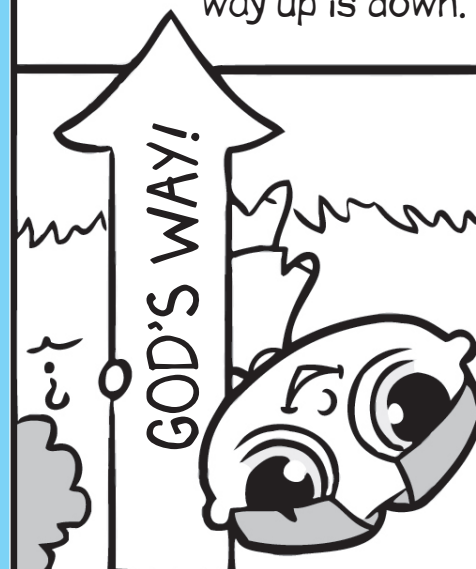
"So my teammates called me a fool."



I thought of something encouraging,

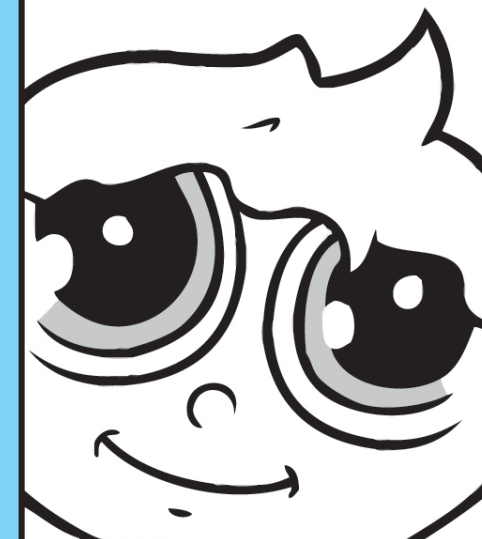


I reminded him God's way up is down.



And when I hugged and encouraged him,

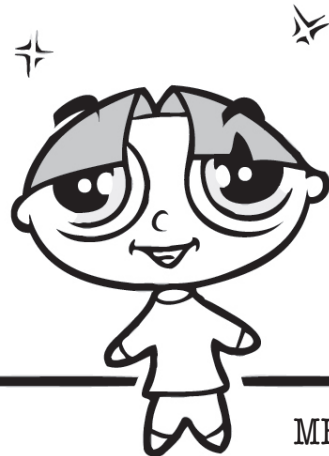
A smile replaced the frown.



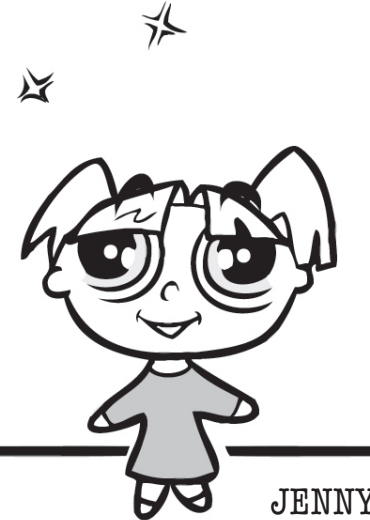
I'm learning to help
others



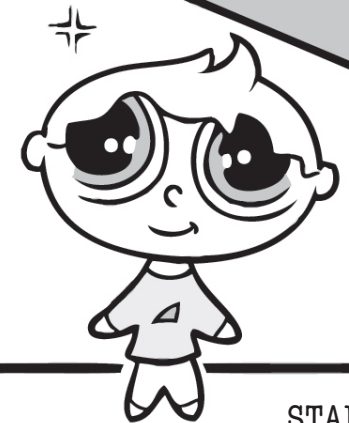
To focus on God's
light.



It takes some
effort to do this.



But it is a winning fight!



Jesus tells us, "I am the light of the world. If you follow me, you won't be stumbling through the darkness, because you will have the light that leads to life" (John 8:12 NLT).

S&S link: Character Building: Personal Responsibility: Problem Solving-1b

Authored by Christi S. Lynch, based on writings by Maria Fontaine. Illustrations by Stefan Merour. Design by Christia Copeland.

Published by My Wonder Studio. Copyright © 2011 by The Family International