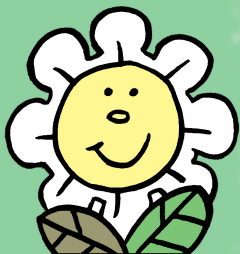
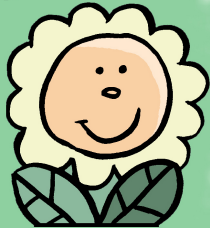




Anna and the Flower Garden

DIORAMA

Instructions



Here is a diorama you can assemble to accompany the story "Anna and the Flower Garden."

Print each page on cardstock and follow the instructions for assembling the diorama. Take your time, and don't feel shy about asking for help if some parts are a little difficult to put together.



Anna and the Flower Garden **DIORAMA**

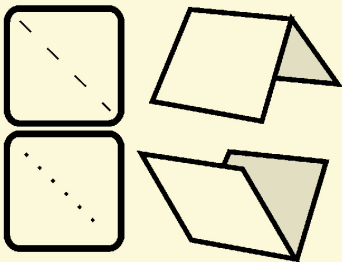
Scoring

Score the fold lines to make a crisp straight fold. It is important for the small pieces to be scored before folding. To score, place a metal ruler along the fold line, and then press with a dull point (such as a pen with no ink) along the fold line to compress the paper.

Tips on scoring

There are two kinds of folds:

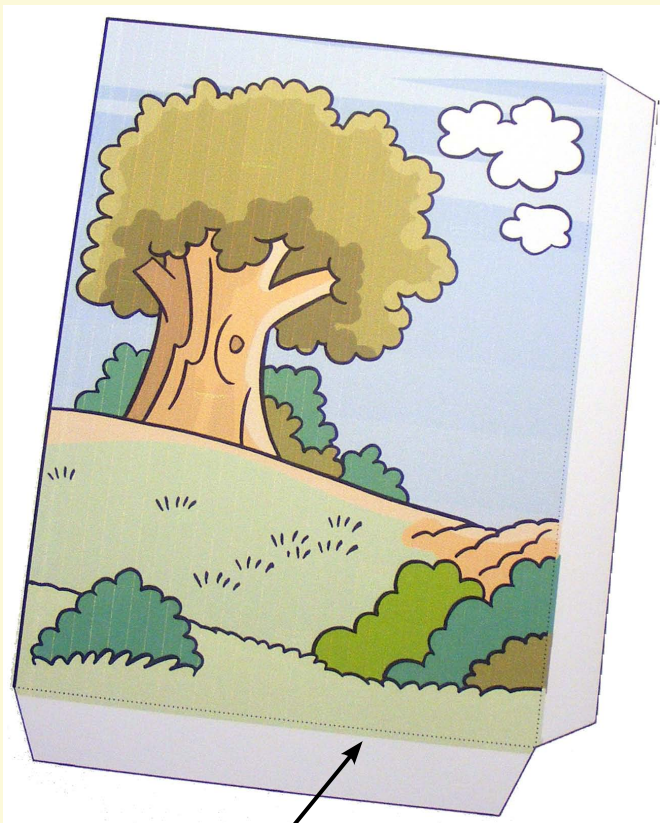
- 1) mountain fold and
- 2) valley fold



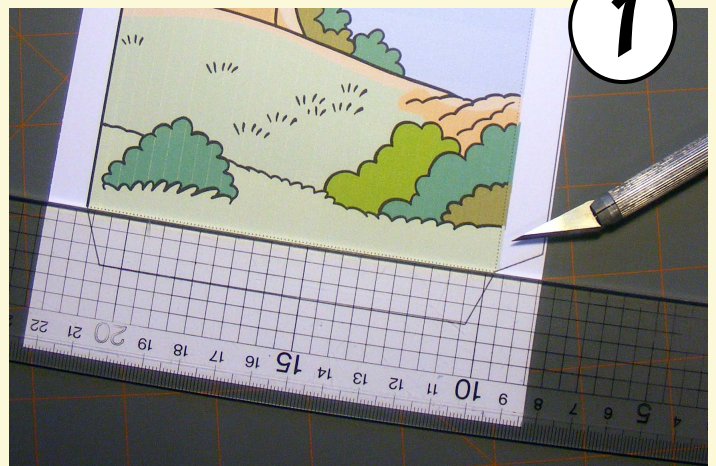
For a **mountain fold**, simply score over the dotted line and fold afterward.

For the **valley fold** follow these instructions:

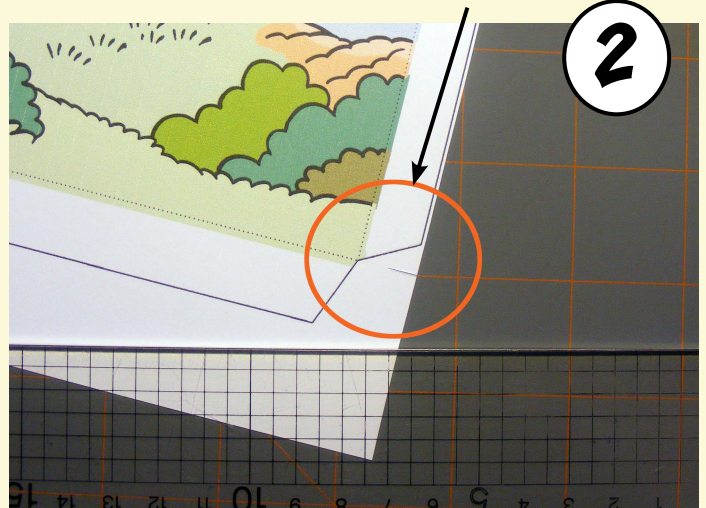
- Cut out the piece you need to prepare, leaving a white space around the picture to help in preparing for scoring.



valley fold line



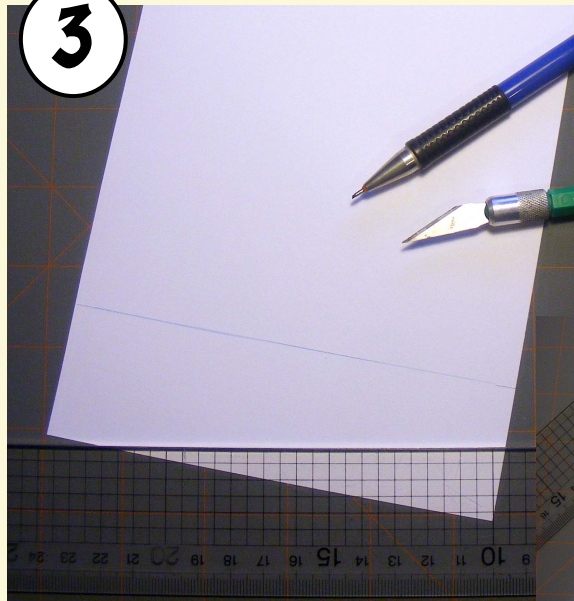
- Position your ruler on the line, and cut two small indents on each side of the page.





Anna and the Flower Garden **DIORAMA**

3



- Turn the page over and draw a line between your two cuts. Score along this line. Now turn the page over again and fold along the line. This will give you a clear crisp fold.

4



1



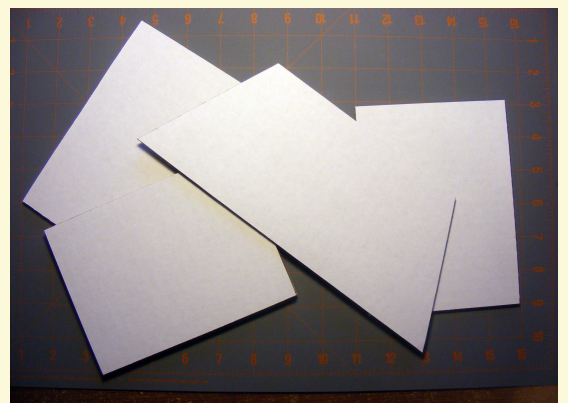
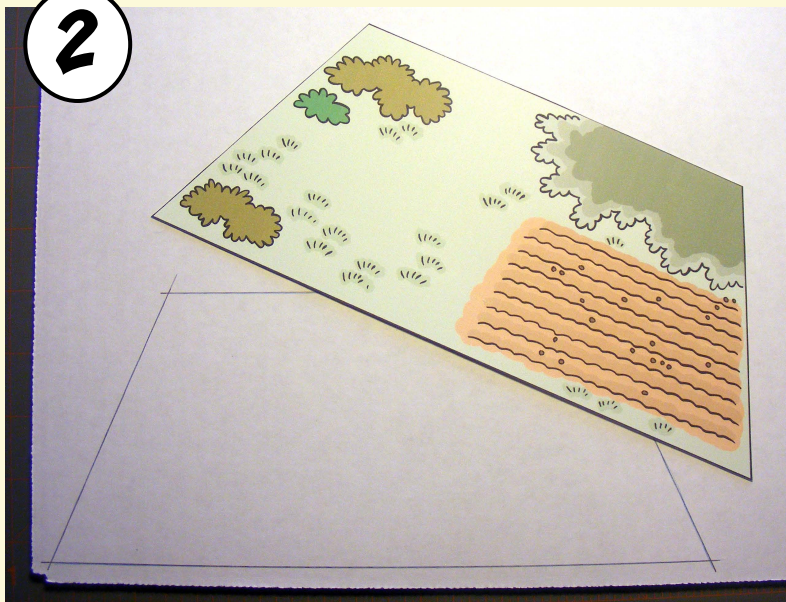
HOW TO ASSEMBLE YOUR DIORAMA

Cut out the four background pieces, after having finished scoring the fold lines.

OPTIONAL

To reinforce your backgrounds, using light cardboard, cut out a piece the same size and shape of each of the parts.

2





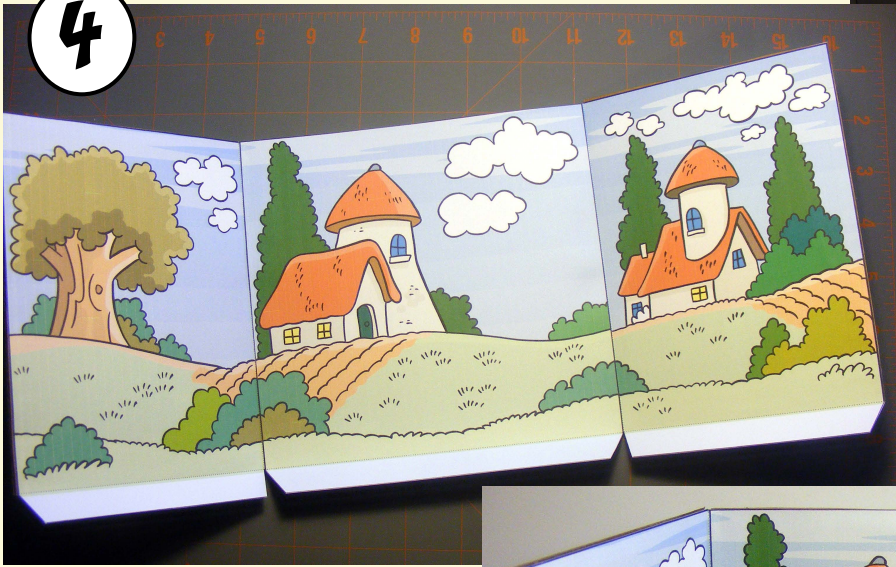
Anna and the Flower Garden **DIORAMA**

Glue the left and right side on their corresponding piece of cardboard (don't do this for the back section yet), and then assemble the three pieces together.

3

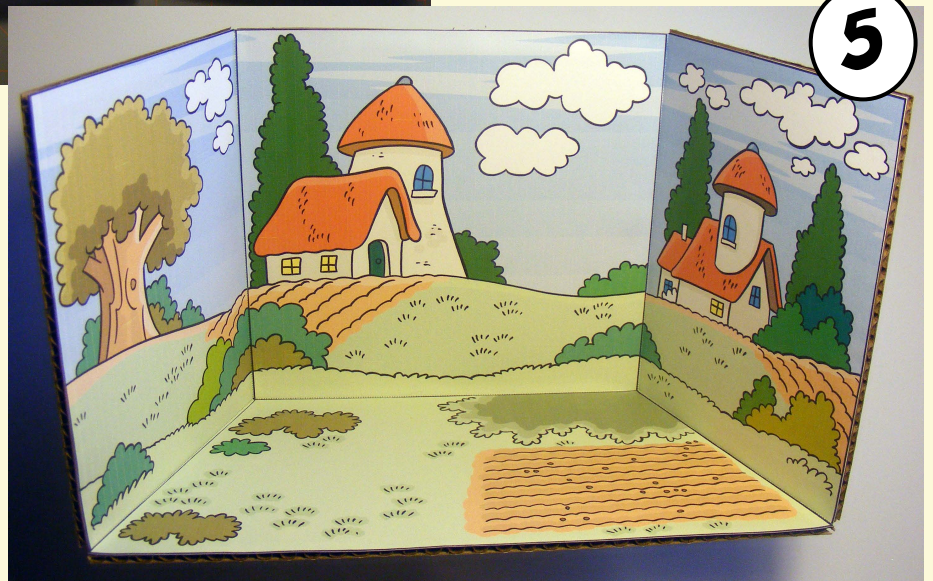


4

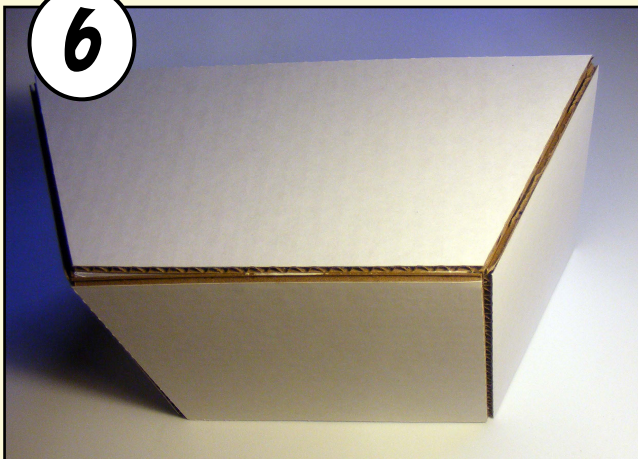


Glue on the base.

5



6



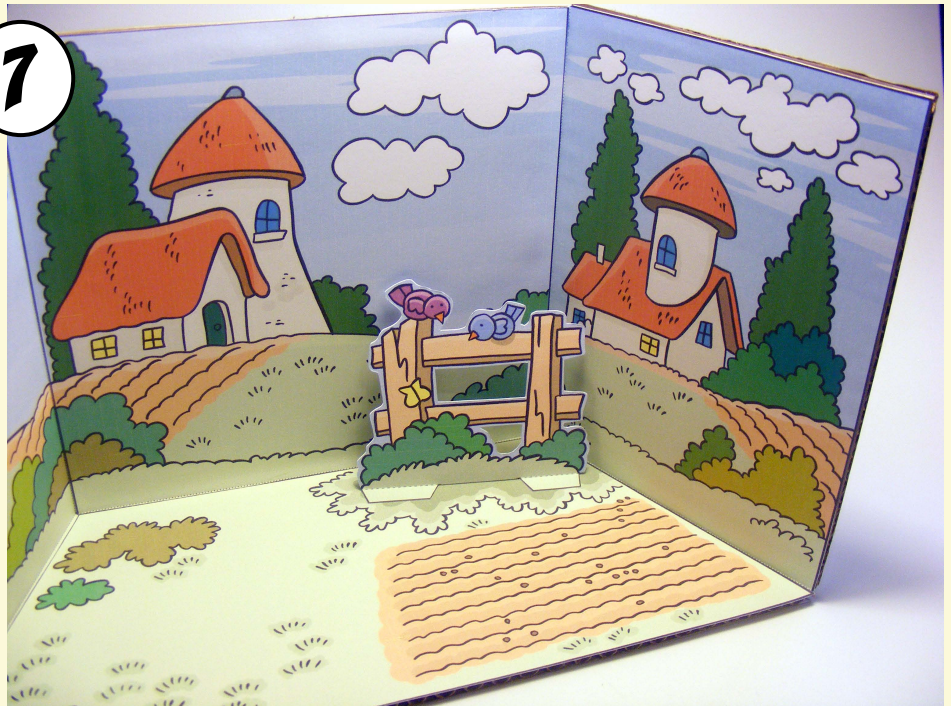
Then glue the final pieces of cardboard on the two remaining parts.



Anna and the Flower Garden **DIORAMA**

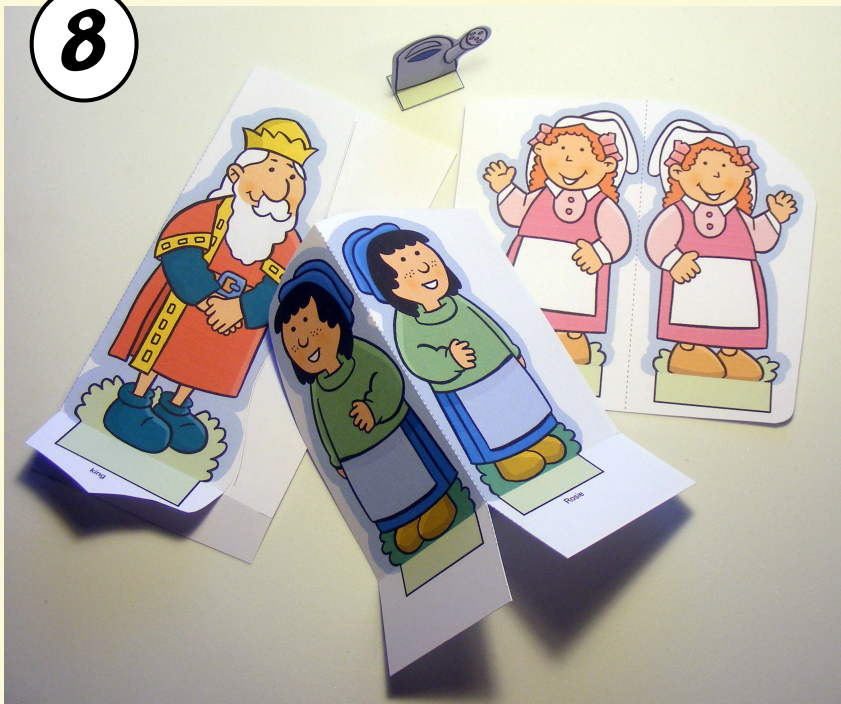
7

Cut out the fence and fold the three tabs. (The right and left tabs are valley folds. The middle tab is a mountain fold.) Then glue to the base.



HOW TO ASSEMBLE THE PEOPLE, THE FLOWERS, AND OTHER DETAILS

8



Roughly cut out the various characters and other pieces, but leave space white around each piece. Score where needed—a valley fold for the tabs and a mountain fold for the middle.

Fold pieces in half along the dotted line and glue together, leaving the tab of the base unglued.

Wait a few minutes for the glue to dry, and then cut along each figure in the light blue area. There is no need to cut right along the black line.

Fold the tabs on both sides of the figure and glue on the corresponding small square.



Anna and the Flower Garden **DIORAMA**

Congratulations!
Your diorama is now complete.

9



Have fun playing with Anna's garden.

Model designed by Didier Martin.
Copyright © 2010 by Didier Martin
<http://jacques-mylittlehouse.blogspot.com/>